

# Stinson's Gemcutting, Inc.

## Red Beryl Faceted Gems ON SALE NOW 10-40% OFF these prices

The gems listed here are all cut from genuine lab grown red beryl crystal. They are NOT some other gem imitation or simulated gem. Each gem comes with Stinson's COA. Email us with the item number(s) you are interested in and we will check inventory to insure availability. We will be glad to send you a picture. We will put the stone(s) you order on hold until we receive your Paypal payment. **The price for stones over \$70 includes FREE SHIPPING in the USA.** Overseas buyers must inquire for shipping charges. Sorry we no longer ship to Italy.

**This page was updated July 5, 2019 --- SALE Discounts shown on Red Beryl HOME page**

Shape	Cut	Size	Weight	Catalog Number	Price of Gem
Square	Princess	7.1 mm	1.80 ct	BRLF0913-17	\$270
Square	Princess	6.8mm	1.63 ct	BRLF0913-18	\$244
Square	Princess	5.3mm	.90 ct	BRLF 0913-40	\$95
Square	Backgammon	7mm	2.29 ct	BRLF0913-13	\$344
Square	Brilliant	5.3mm	.76ct	BRLF0615-6	\$69
Square	Backgammon	6mm	1.39ct	BRLF0913-14	\$146
Square	Princess pair	4.4mm	1.00ct TW	BRLF0913-32	\$90
Square	Princess pair	4.3mm	0.82ct TW	BRLF0913-31	\$74
Square	Princess pair	5.5mm	1.94ct TW	BRLF0913-29	\$175
Square	Princess pair	4.5-4.7mm	1.15ct TW	BRLF0913-30	\$104
Square	Princess pair	4.3- 4;4 mm	.88ct TW AA	BRLF0913-23	\$79
Square	Backgammon	5.3 x 5mm	.81 ct	BRLF0218-12	\$85
Square	Backgammon	4.3 mm	.49 ct	BRLF0218-7	\$44
Square	Backgammon	4 mm	.43 ct	BRLF0218-13	\$39
Square	Backgammon	4.6 x 4.9 mm	.68 ct	BRLF0218-6	\$61
Square	Step Cut	4 mm	.36 ct AA	BRLF0218-16	\$30
Square	Step Cut	3 mm	12 ct	BRLF0218-11	\$11
Square	Triang Bar Crown	4.3 mm	.46 ct AA	BRLF0415-1	\$42



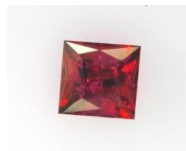
Square Backgammon



Princess Cut



Princess Pair



Harlequin



Bar



Backgammon



Cushion

<b>Rectangle</b>	Emerald Cut	8.6 x 6.6 mm	2.31ct	BRLF0913-5	\$346
Rectangle	Backgammon	7.7 x 6 mm	1.94 ct	BRLF0913-19	\$290
Rectangle	Backgammon	7 x 5 mm	1.15 ct	BRLF0913-20	\$120
Rectangle	Zig Zag	9 x 7 mm	2.44 ct	BRLF0913-9	\$366
Rectangle	Zig Zag	9.6 x 7mm	2.54 ct	BRLF0913-8	\$380
Rectangle	Zig Zag	9 x 7 mm	2.54 ct	BRLF0913-10	\$380
Rectangle	Emerald Cut	6 x 8 mm	1.68 ct	BRLF0112-10	\$252
Rectangle	Emerald Cut	7 x 9 mm	2.31 ct	BRLF0112-9	\$346
Rectangle	Emerald Cut	6 x 8 mm	2.06 ct	BRLF0112-8	\$309
Rectangle	Emerald Cut	9 x 7 mm	2.77 ct	BRLF0112-7	\$415
Rectangle	Emerald Cut	9 x 7 mm	2.37 ct	BRLF0112-6	\$355
Rectangle	Emerald Cut pair	6.3 x 4 mm	1.27 ct TW	BRLF0913-43	\$114
Rectangle	Emerald Cut pair	5.6 x 3.4 mm	0.84 ct TW	BRLF0913-44	\$75
Rectangle	Emerald Cut	7 x 5 mm	0.98 ct	BRLF107112	\$89
Rectangle	Emerald Cut	6 x 4 mm	0.71 ct	BRLF107116	\$64
Rectangle	Emerald Cut pair	5.4 x 3.3 mm	0.89 TTW	BRLF0218-24	\$80
Rectangle	Backgammon pair	4 x 6 mm	1.36 TTW	BRLF0218-4	\$143
Rectangle	Backgammon	6.3 x 4.3 mm	0.92 ct AA	BRLF0218-14	\$68
Rectangle	Backgammon	5.4 x 3.4 mm	0.42 ct A	BRLF0218-15	\$19
Rectangle	Backgammon	6.4 x 4.6 mm	0.87 ct	BRLF0218-5	\$91
Rectangle	Emerald Cut	6.5 x 4.4 mm	.81 ct	BRLF0218-22	\$85
Rectangle	Emerald Cut	6 x 4.2 mm	.60 ct	BRLF0218-25	\$54
Rectangle	Emerald Cut	5.6 x 4.2 mm	.57 ct	BRLF0218-27	\$51
Rectangle	Emerald Cut	6.3 x 3.7 mm	.49 ct	BRLF0218-26	\$44
Rectangle	Emerald Cut	6.5 x 3.9mm	.48 ct	BRLF0218-28	\$43
Rectangle	Emerald Cut	6.5 x 3.5 mm	.38 ct	BRLF0218-30	\$34
<b>Rectangle</b>	Emerald Cut	5.3 x 3.4 mm	.33 ct	BRLF0218-29	\$30

Rectangle	Emerald Cut	2.3 x 3 mm	.24 ct		BRLF0218-21	\$22
<b>Cushion</b>	Checkerboard	7.1x5.1mm	1.03ct		BRLF0716-1	\$129
Cushion	Brilliant	6x4mm	0.47ct	A	BRLF0615-3	\$42
Cushion	Checkerboard	7.3x5.4mm	1.31ct	A	BRLF0218-7	\$69
Cushion	Checkerboard	7.2x5mm	1.06ct	A	BRLF0218-9	\$56
Cushion	Brilliant	5.5x3.5mm	0.32ct		BRLF0218-31	\$29
Cushion	Brilliant	5.3x3.3mm	0.29ct		BRLF0218-34	\$26
Cushion	Brilliant	5.3x3.1mm	0.37ct		BRLF0218-32	\$33
Cushion	Brilliant	5x3mm	0.25ct		BRLF0218-33	\$22



Checkerboard Cushion

Cushion Brilliant

Diamond	Back pair	8.4 x 5.8 & 8.9 x 5.7mm	2.30 ct TW		BRLF0913-47	\$218
---------	-----------	-------------------------	------------	--	-------------	-------



Diamond Back Cut

<b>Triangle</b>	Trilliant Cut	6 mm	0.79ct		BRLF0615-1	\$95
Triangle	Trilliant Cut	5.3 mm	0.62ct		BRLF0615-2	\$85
Triangle	Brilliant pair	3 mm	0.20 ct TW		BRLF0913-25	\$25
Triangle	Brilliant	4 mm	0.18 ct		BRLF0316-1	\$25
Triangle	Crazy Triangle	4.3 mm	0.22 ct		BRLF0615-7	\$30
Triangle	Trilliant Cut	5.0 mm	0.43ct		BRLF0218-3	\$39
Triangle	Trilliant Cut	3.6 x 3.8 mm	0.19 ct		BRLF0218 -10	\$17



Pair

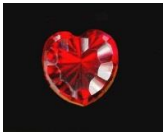


Trilliant Cut

<b>Round Brilliant pair</b>	4.2mm	0.58ct TW		BRLF0913-37	\$52
Round Brilliant	4.8mm	0.45 ct		BRLF1016-1	\$59
Round Brilliant	5.4 mm	0.75 ct		BRLF0218-1	\$79
Round Brilliant checkerboard	5 mm	0.39 ct AA		BRLF0218-2	\$35
Round Brilliant	4.3 mm	0.30 ct		BRLF0218-18	\$27
Round Brilliant checkerboard	4.3 mm	0.30 ct AA		BRLF0218-17	\$25
Round Brilliant	4.2 mm	0.27 ct AA		BRLF0218-19	\$22
Round Brilliant	3.7 mm	0.19 ct		BRLF0218-20	\$17

**Custom Firecuts** we have rough available to cut one just for you! email for details.

Crown of Fire	9.45 x 11.11 mm	3.31 ct	Long Octagon Concave cut	BRLF0218 -35	SOLD
Starfire	9.24 mm	3.45 ct	Hexagon concave	BRLF0218-36	SOLD
Heart on Fire	8.52 x 8.56 mm	2.06 ct	Concave cut Heart	BRLF 0218-37	SOLD



NEW DESIGN 1<sup>st</sup> gem! Exceptional Brilliance. “Three Alarm Fire”

Concave cut trilliant. 8.5 mm 1.89 ct BRLF 0419-1 \$397 I named this one for three things: Head over heels Romance, Desire, and Soulmate. SOLD

All Gems are AAA quality unless noted as AA or A.

\* AA Gems have slightly visible flaws

\* A Gems have very noticeable flaws

\*\* TW means the Total Weight of a pair or parcel

Email requests for custom cuts, sizes and availability: [stinsons@gemservice.com](mailto:stinsons@gemservice.com)

**Click on the “BACK” arrow at top to return to main Red Beryl Page**