

# **Tourmaline**

**Rubellite, Indicolite, Pink, Chrome**

This page was updated July 4 2019

---

TO ORDER:

**Email:** [stinsons@gemservice.com](mailto:stinsons@gemservice.com) We'll check *to insure the gem you want is available!!*

*Click on Back Arrow at top of page to return to main page.*

---



**Tourmaline Indicolite:** Concave cut rectangle. The custom faceting has produced an unusually brilliant gem with rich dark blue green color. It weighs approx.. 1.57cts and measures approx.. 6.29 X 5.35 X 5.72mm deep. The eye visible inclusion does not detract from the beauty of this gem due to the unique cut and masking brilliance. Price \$225. **SOLD**

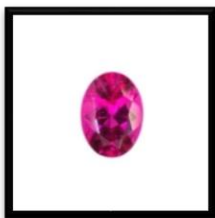
---



**Tourmaline bi-color \$195**

Approx. 8.2. x 5.2 x 3.8 mm. 1.57 carats. All natural watermelon/green emerald cut gem. TM0037

---



**Tourmaline Rubellite **sold****

Approx. 5- w x 6.8 - l x 3.65 - d mm. 0.76 carats. Intense rosy red color with slight inclusions. A beautiful oval gem. TM0077

---



### Tourmaline Rubellite Pair **sold**

Approx. 5 mm. 0.91 TW carats. Intense rosy red color with slight inclusions. A beautiful brilliant matched pair for earrings or side stones. TM0067

---



### Tourmaline Rubellite \$359

Approx. 4.9 w x 8.3 - l x 4.1 - d mm. 1.03 carats. Intense rosy red color with slight inclusions. A beautiful Split Facet oval gem. TM0057

---

If you are a serious tourmaline lover, don't miss our GIA Certified *Brazilian Origin* Paraiba tourmalines! They are listed on a separate PDF page in "Gems A to Z".

---

Paypal and certified check payments ship immediately. Personal checks must clear before we ship. If you are not completely satisfied after receiving your shipment, return it within 7 days after receipt for a full refund, excluding shipping.

**Note: Items must be returned in the same condition as received.**

**EMAIL US: [stinsons@gemservice.com](mailto:stinsons@gemservice.com)**

---

***Click on Back Arrow at top of page to return to main page.***