

Tourmaline

Rubellite, Indicolite, Pink, Chrome

TO ORDER:

Email: stinsons@gemservice.com We'll check *to insure the gem you want is available!!*

Click on Back Arrow at top of page to return to main page.

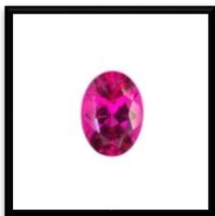


Tourmaline Indicolite: Concave cut rectangle. The custom faceting has produced an unusually brilliant gem with rich dark blue green color. It weighs approx.. 1.57cts and measures approx.. 6.29 X 5.35 X 5.72mm deep. The eye visible inclusion does not detract from the beauty of this gem due to the unique cut and masking brilliance. Price \$225. **SOLD**



Tourmaline bi-color \$195 **SALE \$145!**

Approx. 8.2. x 5.2 x 3.8 mm. 1.57 carats. All natural watermelon/green emerald cut gem. TM0037



Tourmaline Rubellite **sold**

Approx. 5- w x 6.8 - l x 3.65 - d mm. 0.76 carats. Intense rosy red color with slight inclusions. A beautiful oval gem. TM0077



Tourmaline Rubellite Pair **sold**

Approx. 5 mm. 0.91 TW carats. Intense rosy red color with slight inclusions. A beautiful brilliant matched pair for earrings or side stones. TM0067



Tourmaline Rubellite \$359 **SALE \$269!**

Approx. 4.9 w x 8.3 - l x 4.1 - d mm. 1.03 carats. Intense rosy red color with slight inclusions. A beautiful Split Facet oval gem. TM0057

If you are a serious tourmaline lover, don't miss our GIA Certified *Brazilian Origin* Paraiba tourmalines! They are listed on a separate PDF page in "Gems A to Z".

This page was updated January 24, 2020

[EMAIL US: stinsons@gemservice.com](mailto:stinsons@gemservice.com)

Click on Back Arrow at top of page to return to main page.