

Tourmaline

Rubellite, Indicolite, Pink, Chrome

This page was updated February 7, 2018

Don't see what you are looking for? Tell us your price range and we'll check inventory!

TO ORDER:

Email: stinsons@gemservice.com We'll check to insure the gem you want is available!!

Click on Back Arrow at top of page to return to main page.

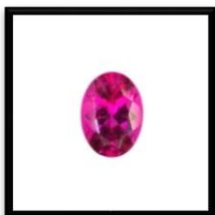


Tourmaline Indicolite: Concave cut rectangle. The custom faceting has produced an unusually brilliant gem with rich dark blue green color. It weighs approx.. 1.57cts and measures approx.. 6.29 X 5.35 X 5.72mm deep. The eye visible inclusion does not detract from the beauty of this gem due to the unique cut and masking brilliance. Price \$225.



Tourmaline bi-color \$195

Approx. 8.2. x 5.2 x 3.8 mm. 1.57 carats. All natural watermelon/green emerald cut gem. TM0037



Tourmaline Rubellite \$295

Approx. 5- w x 6.8 - l x 3.65 - d mm. 0.76 carats. Intense rosy red color with slight inclusions. A beautiful oval gem. TM0077



Tourmaline Rubellite Pair \$185

Approx. 5 mm. 0.91 TW carats. Intense rosy red color with slight inclusions. A beautiful brilliant matched pair for earrings or side stones. TM0067



Tourmaline Rubellite \$359

Approx. 4.9 w x 8.3 - l x 4.1 - d mm. 1.03 carats. Intense rosy red color with slight inclusions. A beautiful Split Facet oval gem. TM0057

If you are a serious tourmaline lover, don't miss our GIA Certified *Brazilian Origin* Paraiba tourmalines! They are listed on a separate PDF page in "Gems A to Z". Prices have been slashed!

Paypal and certified check payments ship immediately. Personal checks must clear before we ship. If you are not completely satisfied after receiving your shipment, return it within 7 days after receipt for a full refund, excluding shipping.

Note: Items must be returned in the same condition as received.

EMAIL US: stinsons@gemservice.com

Click on Back Arrow at top of page to return to main page.