

# Ametrine

*Ametrine is a blend of Amethyst and Citrine*

Stinson's *natural untreated* ametrine - it only comes from the Anahi mine in Bolivia, and our rough is hand picked by the mine owner. **To purchase:** Email us first and we will check inventory to insure the gem you want is available. **The price includes Priority shipping in the USA. Overseas buyers must inquire before ordering.** Stinson's gems are all 100% satisfaction guaranteed and may be returned within 10 days for a full refund. Gems must be returned undamaged and in the same condition as when sent.

Our ametrine gems are *eye clean to flawless clarity!* Weights and measurements are approximate.

This page was updated July 2024

⇒ **Flawless rough is in stock for custom cuts. Email to inquire.**

**Our faceted stock has Sold Out. Rough is available for custom cuts.**



Opposed Bar Cut. 4.25 x 8.53mm weight 5.72 ct QAMF0913-15 Price \$149



Cross Reflector Cut. 13.2 x 7.8mm weight 4.20 ct QAMF0913-23 Price \$109

Rectangle (Half Moon Bar)	12.34 x 6.28mm	weight 2.94	QAMF0913-31	Price \$79
Rectangle (Emerald Checker)	13 x 7mm	weight 4.99ct	QAMF0913-18	Price \$129
Rectangle (Zig Reflector)	12.24 x 6.18mm	weight 2.07 ct	QAMF0913-33	Price \$59
Rectangle (Emerald Cut)	13.4 x 10.2mm	weight 6.76ct	QAMF0112-4	Price \$169
Rectangle (Emerald Cut)	12.3 x 9.9mm	weight 5.04ct	QAMF0112-3	Price \$129
Rectangle (Emerald Cut)	12.6 x 9.7mm	weight 6.91ct	QAMF0112-1	Price \$179
Rectangle (Emerald Step cut)	13.81 x 10.35 x 8.05	7.9 ct	QM0338	Price \$205



Bar Cut **matched pair** 13.5x6mm total weight 6.71ct QAMF0112-8 Price \$169



Scissor Cut **matched pair** 13x4.7mm 3.92ct TTW QAMF0112-10 Price \$98

Diamond (Aztec Eye) 13.77 x 10.8mm weight 3.75ct QAMF0913-21 Price \$99

Diagonal Rect. (Diagonal Opposed Bar) 11 x 8.5mm weight 5.67ct QAMF0913-16 Price \$149

Oval (Omni Oval) 11.28 x 8.7mm weight 3.00 ct QAMF0913-30 Price \$79

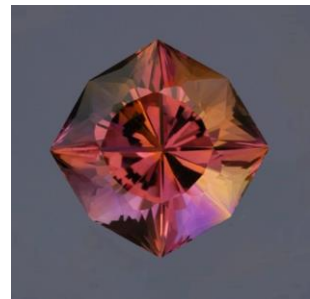
Square (Monkey's Fist) 10.5mm weight 4.95ct QAMF0913-19 Price \$129

Square (Harlequin Sq.) 10.2x 9.84mm weight 4.57ct QAMF0913-20 Price \$119

Square (Light House) 9.79mm weight 4.28ct QAMF0913-27 Price \$109

Square (Deep Dreams) 9.5 x 9.6mm weight 3.55ct QAMF0913-12 Price \$89

### *My favorite custom cut Ametrine Gems*



Left: "Aurora Star" is now in the Permanent Display Collection, Wertz Gallery, Carnegie Museum of Natural History. Left Center: "Kiss of the Dragon" is now in a private collection. Right Center: "Sweet Dreams" is now in a private Collection. Right" Winner of the 1<sup>st</sup> International "Gemmy's" competition "Eye of the Dragon" permanent collection Houston Museum of Natural History. Email: [stinsons@gemservice.com](mailto:stinsons@gemservice.com) to schedule your own custom piece!