

Red Beryl *Faceted Gems*

We want you to be aware that the gems listed here are cut from genuine lab grown red beryl crystal, not some other imitation or simulated gem. Please read the web page! Email us with the item number(s) you are interested in and we will check inventory to insure availability. We will be glad to send you a picture. We will put the stone you order on hold until we receive your payment. **The price for stones over \$70 includes free shipping in the USA. Overseas buyers must inquire for shipping charges. We do not ship to all countries.**

This page was updated October 15, 2016

Shape	Cut	Size	Weight	Catalog Number	Price of Gem
Square	Harlequin	5.3mm	.87 ct	BRLF0913-3	\$91
Square	Princess	7.1 mm	1.80 ct	BRLF0913-17	\$270
Square	Princess	6.5mm	1.68 ct	BRLF0913-6	\$252
Square	Princess	6.8mm	1.63 ct	BRLF0913-18	\$244
Square	Princess	5.3mm	.90 ct	BRLF 0913-40	\$95
Square	Backgammon	7mm	2.29 ct	BRLF0913-13	\$344
Square	Brilliant	5.3mm	.76ct	BRLF0615-6	\$69
Square	Backgammon	6mm	1.39ct	BRLF0913-14	\$146
Square	Princess pair	4.4mm	1.00ct TW	BRLF0913-32	\$90
Square	Princess pair	4.3mm	0.82ct TW	BRLF0913-31	\$74
Square	Princess pair	5.5mm	1.94ct TW	BRLF0913-29	\$175
Square	Princess pair	4.5-4.7mm	1.15ct TW	BRLF0913-30	\$104



Square Backgammon



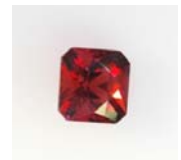
Princess Cut



Princess Pair



Harlequin



Square Brilliant



Backgammon Cut

Zig Zag Cut (Rect)

Cushion

Rectangle	Emerald Cut	7.4 x 5.4 mm	1.23 ct	BRLF0913-41	SOLD
Rectangle	Emerald Cut	8.6 x 6.6 mm	2.31ct	BRLF0913-5	\$346
Rectangle	Backgammon	7.5 x 5.2 mm	1.29 ct	BRLF0913-15	\$135
Rectangle	Backgammon	7.7 x 6 mm	1.94 ct	BRLF0913-19	\$290
Rectangle	Backgammon	7 x 5 mm	1.15 ct	BRLF0913-20	\$120
Rectangle	Zig Zag	9 x 7 mm	2.44 ct	BRLF0913-9	\$366
Rectangle	Zig Zag	9.6 x 7mm	2.54ct	BRLF0913-8	\$380
Rectangle	Zig Zag	9 x 7 mm	2.54 ct	BRLF0913-10	\$380
Rectangle	Bar Cut	8 x10 mm	3.60 ct	BRLF0112-4	\$540
Rectangle	Emerald Cut	6 x 8 mm	1.68 ct	BRLF0112-10	\$252
Rectangle	Emerald Cut	7 x 9 mm	2.31 ct	BRLF0112-9	\$346
Rectangle	Emerald Cut	6 x 8 mm	2.06 ct	BRLF0112-8	\$309
Rectangle	Emerald Cut	9 x 7 mm	2.77 ct	BRLF0112-7	\$415
Rectangle	Emerald Cut	9 x 7 mm	2.37 ct	BRLF0112-6	\$355
Rectangle	Emerald Cut pair	6.3 x 4 mm	1.27ct TW	BRLF0913-43	\$114
Rectangle	Emerald Cut pair	5.6 x 3.4 mm	0.84 ct TW	BRLF0913-44	\$75
Rectangle	Emerald Cut	7 x 5 mm	0.98 ct	BRLF107112	\$89
Rectangle	Emerald Cut	6 x 4 mm	0.71 ct	BRLF107116	\$64
Checkerboard	Cushion	7.1x5.1mm	1.03ct	BRLF0716-1	\$125
Cushion	Brilliant	6x4mm (slightly included)	0.47ct	BRLF0615-3	\$42

OVAL

Oval	Brilliant	4.7x3.8 mm	0.23 ct	BRLF0112-12	SOLD
------	-----------	------------	---------	-------------	------



Checkerboard Cushion

Cushion Brilliant

Diamond Back pair 8.4 x 5.8 & 8.9 x 5.7mm 2.30 ct TW

BRLF0913-47

\$218



Diamond Back Cut

Triangle	Trilliant Cut	6mm	0.79ct	BRLF0615-1	\$95
Triangle	Trilliant Cut	5.3mm	0.62ct	BRLF0615-2	\$75
Triangle	Brilliant pair	3mm	0.20ct TW	BRLF0913-25	\$25
Triangle	Brilliant	4mm	0.18ct	BRLF0316-1	\$25
Triangle	Crazy Triangle	4.3mm	0.22ct	BRLF0615-7	\$30



Triangle Pair

Triangle (Trilliant Cut)

Aztec Eye	7.2x5.4mm	0.69ct	BRLF0615-5	SOLD
Round Brilliant pair	4.2mm	0.58ct TW	BRLF0913-37	\$52
Round Brilliant	4.8mm	0.45ct	BRLF1016-1	\$50

Parcels are available in mixed sizes and shapes.

Email requests for sizes and availability: stinsons@gemservice.com

Click on the “BACK” arrow at top to return to main Red Beryl Page