

Turquoise

**Natural and Stabilized Sleeping Beauty Mine
Natural Timberline Mine and Chinese Turquoise**

This page was updated November 6, 2017

TO ORDER:

Email: stinsons@gemservice.com We'll check to insure the gem you want is available!!

Click on Back Arrow at top of page to return to main page.

TU10174 \$65

Sleeping Beauty. NATURAL/UNTREATED
Medium color Solid Nugget. 1 PIECE. 26.75 cts.



Lightly sanded and polished to bring out the awesome color that made the Sleeping Beauty mine famous. The mine is closed and premium nuggets are scarce. Measures approx. 31 x 19 x 6.6mm.

TU7113 \$449

Sleeping Beauty. STABILIZED Large Flats Med/Dark 4 pcs / 610 cts.



TU2121 \$698

Sleeping Beauty STABILIZED_ Flats Dark 12 pcs / 725 cts.



TU10179 \$80

NATURAL UNTREATED

Med/Dark Green/Blue. *Solid* Nugget 1 PIECE. 65 cts.
Lightly sanded and polished. Old Stock -- Arizona Turquoise



TU10178 \$80

Sleeping Beauty NATURAL UNTREATED

Med/Dark 1 PIECE. 65 cts.



TU2124 \$148

Sleeping Beauty STABILIZED. Med/Dark
9 pcs / 195 cts. Trims. ground / sawn pieces



TU2224 \$179

Sleeping Beauty STABILIZED. Medium 14 pcs / 225 cts.
Trims. ground / sawn pieces

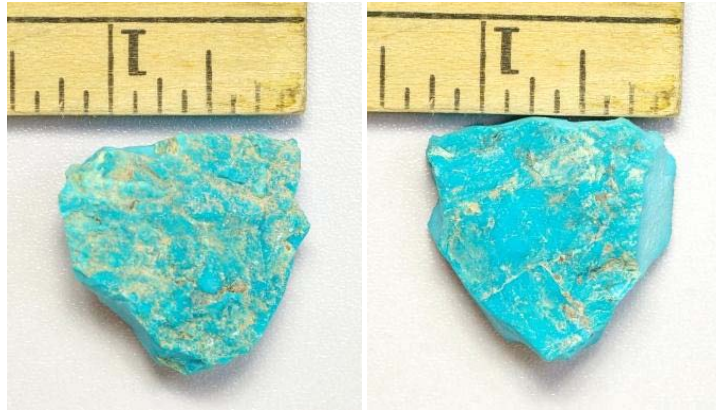


TU10175 \$80

Sleeping Beauty NATURAL UNTREATED
Med/Dark **1 PIECE**. 65.8 cts.



TU10176 \$95
Sleeping Beauty *NATURAL UNTREATED*
Med/Dark **1 PIECE**. 76.2 cts.



TU2125 \$258
Sleeping Beauty *STABILIZED*. Medium/Dark 16 pcs / 325 cts
Trims ground / sawn pieces



TU101712 \$79
NATURAL UNTREATED
Light to Medium Green. **2 pieces**. 281 cts.



TU2126 \$268
Sleeping Beauty STABILIZED. Medium 18 pcs / 335 cts
Mixed ground/ sawn pieces



TU2114 \$419
Sleeping Beauty STABILIZED Light to Med
1 piece 480 cts approx 16 x 47 x 75 mm



TU10172 \$125
Sleeping Beauty *Stabilized*
Med/Dark Trims. 380 cts.



TU10173 \$50

Sleeping Beauty STABILIZED. Medium 10 pcs / 150 cts
core drills and trims



TU10171 \$35

Sleeping Beauty STABILIZED. Medium 206 cts
small trims great for inlay or mosaics



TU10177 \$200

Sleeping Beauty *NATURAL UNTREATED*
Med/Dark 1 PIECE. 161.6 cts.



TU101710 \$185
Sleeping Beauty STABILIZED.



“Stairway to Heaven” Signed Original Carving. Natural Sleeping Beauty.
10.40 cts 23 x 14 mm \$159

TB1014 \$519 */entire parcel*

STABILIZED BEADS Chinese turquoise
Largest beads in photo are approx 1 ¼ in long.
This is our last remaining stock – don't miss this deal!!
Many mines have closed and prices have increased.

Entire parcel of beads – *everything shown!*
2600 + carats only 20 cents per carat!



TQ00019 \$49

Sleeping Beauty Natural Medium 9.6 x 7 mm 1.51 ct



TQ00039 \$79

Sleeping Beauty Natural Medium 15.6 x 6.9 mm 3.68 ct



WHAT IS *Stabilized* Turquoise?

It should be noted that turquoise has been treated for thousands of years, usually with waxes and oils. Modern techniques solve old problems of changing color and chalkiness. A high percentage of turquoise on today's market has been treated with epoxy, resin or some other form of liquid plastic. This technique uses pressure to force the solution deep into the turquoise rough, making it harder, and not likely to change color from contact with body oils or cleaning chemicals, soaps, etc. This is an important advanced technique because turquoise is porous! Natural untreated absorbs lotions, body oils, cooking oils, etc. and stabilization eliminates that problem. The final product takes a better polish. It's harder, not as porous and generally will NOT change color like untreated turquoise, and it is more resistant to scratches.

Our position on stabilization is simple: Given the soft, often chalky nature of turquoise, together with the growing shortage of gemstone quality turquoise, stabilization is generally superior. **We object to its use, only when the consumer is not informed that the turquoise they are buying has been treated /stabilized.** The last few years (when the mine was still in operation) I preferred stabilized. I got a much higher percentage of recovery using stabilized.

Questions? Email and we'll do our best to answer your questions!

Email: stinsons@gemservice.com

Paypal and certified check payments ship immediately. Personal checks must clear before we ship. If you are not completely satisfied after receiving your shipment, return it within 7 days after receipt for a full refund, excluding shipping.

Note: Items must be returned in the same condition as received.

EMAIL US: stinsons@gemservice.com

Click on Back Arrow at top to return to main page