



## *Sapphire & Ruby*



*Sri Lanka (Ceylon), Africa, Thailand, Australia and Montana*

This page was updated November 9, 2017

September birthstone! Sapphire is available in just about every color of the rainbow – and COLOR is what it's all about. Sapphire's extreme hardness of 9 MOHS, puts it at the top of hardness for colored gems, making it great for rings!

---



**Sapphire** Montana. A natural medium blue/purple sapphire from Montana. With lots of sparkle and flash, it is near flawless; a small inclusion is visible under 10X magnification. This gem weighs 1.18 ct and is 6 mm. # CS0012 Price \$489.

---



**Blue Sapphire** Sri Lanka (Ceylon). This top color gem is **GIA Certified** as BLUE color. This gem has the most desirable dark blue, velvety chroma. It is GIA certified 100% *Natural* with NO indications of heating! The weight is 2.30 ct and it measures 8.40 x 5.43 x 5.04 mm. The cut is a Step Cut Cushion. Number CS095-12. Price \$4600

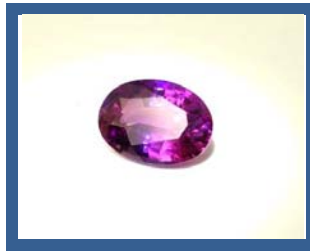
Popular with celebrities like Victoria Beckham and Penelope Cruz, blue sapphire engagement rings are in the center stage spotlight. A symbol of love, truth and commitment, it is impossible to say anything about a sapphire engagement ring without noting the blue beauty worn by Kate Middleton. **Her sapphire ring was worn by the late Princess Diana** and is one of the most famous engagement rings in the world.

Sapphire will stand alone or will work beautifully with white or pink diamond side stones.



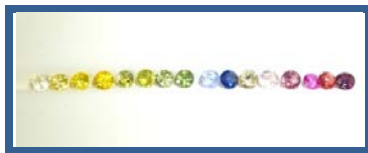
**Sapphire** Sri Lanka oval. This one has a nice color change with blue flashes in fluorescent light and a purple flash under incandescent light! Measures approx 6.6 x 5.4 x 3.5 mm. The gem will fit a standard 7 x 5 mounting. Weight is 1.06 ct. CS0038 Price \$1098

---



**Sapphire** Sri Lanka. Oval. with step cut pavilion and brilliant cut crown. This one is *GIA Certified* : Natural Corundum with heat treatment. Certified color is Purple - and it has that “hot pink” sparkle! A gorgeous, lively gem, it weighs 1.14 ct and measures 7.55 x 5.43 x 3.29. CS0207 Price \$595

---



**Sapphire/Ruby Suite.** *Put some color in your life!* Selected 3.9 to 4.3 mm round 16 brilliant gems. From, Sri Lanka, Thailand and Africa. Total weight 5.79 ct TTW CS 00171. Price \$2895

---



**Star Sapphire.** Cut from the finest star sapphire lab grown crystal. A hand cut cabochon, it makes a stunning gentleman’s ring! 13 mm round , weight 9.74cts. SC 0074. Price \$245



**Ruby.** Umba Valley, Africa. A ruby is just a red sapphire with the same excellent hardness and properties. Round 4.6 mm “Standard Brilliant” cut. Firey red and a lively gem with lots of sparkle and life. .44 carats. CR0068 \$429

---



**Sapphire,** Sri Lanka 5.0 x 6.3 Oval. Medium/Dark blue, this gem is very lively with lots of sparkle! Weight is 1.16 ct CS0037. Price \$1189

---



**Sapphire** Hot Pink... or Ruby? New GIA guidelines say this may be called a ruby – because it is very difficult to define where an exact color begins. We choose to call this a Hot Pink! Either way it’s HOT and a knock-out beauty! Very brilliant throughout this Round Brilliant measures 4.9 mm and weighs well over a half carat at .57 ct. CS00178 Price \$595

---



**Sapphire** Sri Lanka. Imperial golden color. Long oval measures 7.75 x 4.45 x 4.1 mm and weighs 1.33 ct. That’s 1 1/3 ct. Very clean and lively with sparkles that fountain! CS0028 Price \$399



**Sapphire** Montana. Mixed Octagon cut. Brilliant throughout. Small feather on one edge is noticeable under 10X and can be easily covered with a prong mounting. 3.82 mm and it weights just over a quarter carat at .28 ct Price \$219

---



**Sapphire** Sri Lanka. Multi-facet Mixed Cut Oval. This dark blue has those rich velvety blue highlights. Eye clean with small acicular needles that are visible under 10X. Measures 5.5 x 7.4 mm which will fit a 6 x 8 standard mounting. Weight is 1.23 ct. Price \$1599.

---



**Sapphire** Sri Lanka. Eight stone mix of colors and shapes. Rich colors and unique shapes for your imagination. Four rounds ranging from 4.3 to 5mm. Light yellow triangle 4.8mm. Light pink oval 5.2X4.4mm. Raspberry square 4.5mm. Lavender pear shape 6.7X4mm. Total weight is 4.13cts. Price \$1449.

---



**Sapphire** Sri Lanka. Multi-facet Mixed Cut Oval. This dark purplish blue has those rich velvety highlights. Extremely clean. Measures 5.3 x 7.4 mm which will fit a 6 x 8 standard mounting. Weight is 1.61 ct. CSO146 Price \$1399.

---



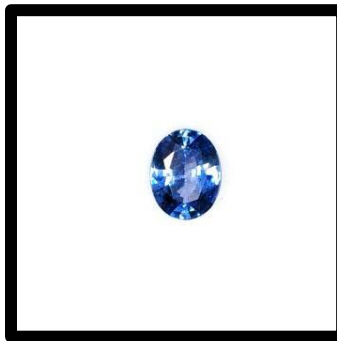
**Sapphire** Sri Lanka. Multi-facet Mixed Cut Oval. This bright medium blue has sparkling highlights. Extremely clean. Measures 6.2 x 7.2 mm. Weight is 1.36 ct. CSO277 Price \$740.

---



**Sapphire** Thailand. Multi-facet Mixed Cut Oval. This bright medium cobalt blue has sparkling highlights. Extremely clean. Measures 6.0 x 7.1 mm. Weight is 1.55 ct. CSO112 Price \$620.

---



**Sapphire** Sri Lanka. Multi-facet Mixed Cut Oval. This beautiful medium blue is brilliant. Extremely clean. Measures 5.9 x 7.5 mm. Weight is 1.42 ct. CSO047 Price \$999.

---



**Sapphire** Sri Lanka. Multi-facet Mixed Cut Oval. This beautiful deep blue has rich velvety highlights. Eye clean. Measures 5.1 x 6.6 mm. Weight is 1.06 ct. CSO237 Price \$1200.

---



**Sapphire** Sri Lanka. Multi-facet Mixed Cut Oval. This beautiful medium blue has bright highlights. Eye clean. Measures 4.8 x 7.2 mm. Weight is 1.34 ct. CSO216 Price \$549

---



**Sapphire** Sri Lanka. Multi-facet Mixed Cut Oval. This beautiful medium dark purple has rich velvety highlights. Eye clean. Measures 5.5 x 6.6 mm. Weight is 1.09 ct. CFO148 Price \$349

---



**Sapphire** Sri Lanka. Five stone mix of colors and shapes. Colors range from light violet to lavender. Eye clean and bright. Three triangles; 5mm, 4.7mm, and 3.6mm. One oval 5.4x3.9 mm. One pear shape 6x3.8mm. Total weight is 2cts. Price \$349.

Don't see what you are looking for? Give us your price range and we'll check inventory.

We have more sizes, colors with prices starting at just \$30 per stone!

TO ORDER:

**Email:** [stinsons@gemservice.com](mailto:stinsons@gemservice.com) We'll check to insure the gem you want is available!!

**Click on Back Arrow at top of page to return to main page.**